



Resilience Research Centre  
Dalhousie University  
6414 Coburg Road  
Halifax, Canada. B3H 2A7  
Ph: (902) 494-3050 (Office)  
Fax: (902) 494-6709  
[www.resilienceresearch.org](http://www.resilienceresearch.org)

## **ICURA Team Meeting Agenda**

**June 6-7, 2010**

**Dalhousie University  
Halifax, Nova Scotia, Canada**

Location: New Academic Building, KTS room, Kings University  
(adjacent to the Dalhousie University Campus—Maps and directions are included with the  
Conference Program)

### ***Sunday, June 6***

#### **12:00 PM**

- **Lunch and Welcome to team members**
- **Introductions**

#### **1:00**

- **Progress Report (10 minutes for each of the five sites: Canada, South Africa, Colombia, China, New Zealand)**

#### **2:00**

- **Expansion of Project to new sites (Brazil, Peru, Cambodia, England, Australia, Central Canada-Wraparound)**
- **Use of methods as an evaluation tool**

#### **2:30**

- **IDRC/SSHRC time lines, budgets, reporting (David O'Brien from IDRC to attend)**

#### **3:15**

- **Review of Methods**

- **Access to youth**
- **Three samples: Service Users, Functionally Resilient, Non-clinical (progress report)**
- **Adaptation of the PRYM**
- **School sample PRYM**
- **Piloting (challenges?)**
- **Qualitative data gathering**
- **Contextualization (document review locally)**

**Afternoon Nutrition Break (as convenient)**

**7:00**

- **Resilience Research Centre Partner Dinner**
- **Saege Bistro—5883 Spring Garden Rd. (shuttles from your hotels will begin at 6:45 PM, or you may wish to walk)**

*Monday, June 7*

**8:00**

- **Breakfast**

**9:00**

- **Terms of Reference: Discussion**
- **Memorandum of Understanding, contracts: Discussion**

**11:00**

- **Research Team Members: Writing projects**
- **Evaluation Team Members: Planning meeting (with David O'Brien)**

**12:00**

- **Schedule of next meetings and training events**
- **Budgets**

**12:30**

- **Wrap-up and scheduling of small group discussions (as required while team members are on site)**

**Morning Nutrition Break (as convenient)**



Resilience Research Centre  
Dalhousie University  
6414 Coburg Road  
Halifax, Canada. B3H 2A7  
Ph: (902) 494-3050 (Office)  
Fax: (902) 494-6709  
[www.resilienceresearch.org](http://www.resilienceresearch.org)

**Project Title:** Pathways to Resilience

**Funding:** Social Sciences and Humanities Research Council of Canada/Canadian International Research Centre: International Community-University Research Alliance (ICURA) 2009-2014

### **Draft: Terms of Reference**

#### **Partners:**

- Resilience Research Centre (RRC), School of Social Work, Dalhousie University, Halifax, Canada (Co-P.I. Michael Ungar)
- Faculty of Education Sciences, North-West University, Vanderbijlpark, South Africa (Co-P.I. Petra Engelbrecht)
- School of Public Health, University of Antioquia, Medellin, Colombia (Co-P.I. Luis F. Duque)
- College of Politics and Law, Capital Normal University, Beijing, China (Co-P.I. Tian Guo-Xiu)
- Department of Social Work, Massey University, Palmerston North, New Zealand (Co-P.I. Robyn Munford)

#### **Overall Purpose:**

As academic and community research partners, we are concerned with understanding the service use patterns (across child welfare, education, mental health, and correctional services) among young people growing up in challenging social and physical ecologies, their access to informal supports (from families, peers and communities), and the influence both have on positive developmental outcomes such as citizenship, family relationships and educational engagement. We will use a mixed methods research design, developed cooperatively with our national and international academic and community partners to learn *what patterns of formal service and*

*informal support work best in varied cultural contexts to mitigate risk and promote well-being.*

Using a *resilience framework*, we will investigate how multiple services and supports provide a culturally relevant context for young people to cope with adversities such as exposure to violence, poverty, marginalization and family-related stressors. This research relies on the experiences of young people to explore the indigenous constellation of services and supports that most influence their personal development and participation in their communities.

### **Goals:**

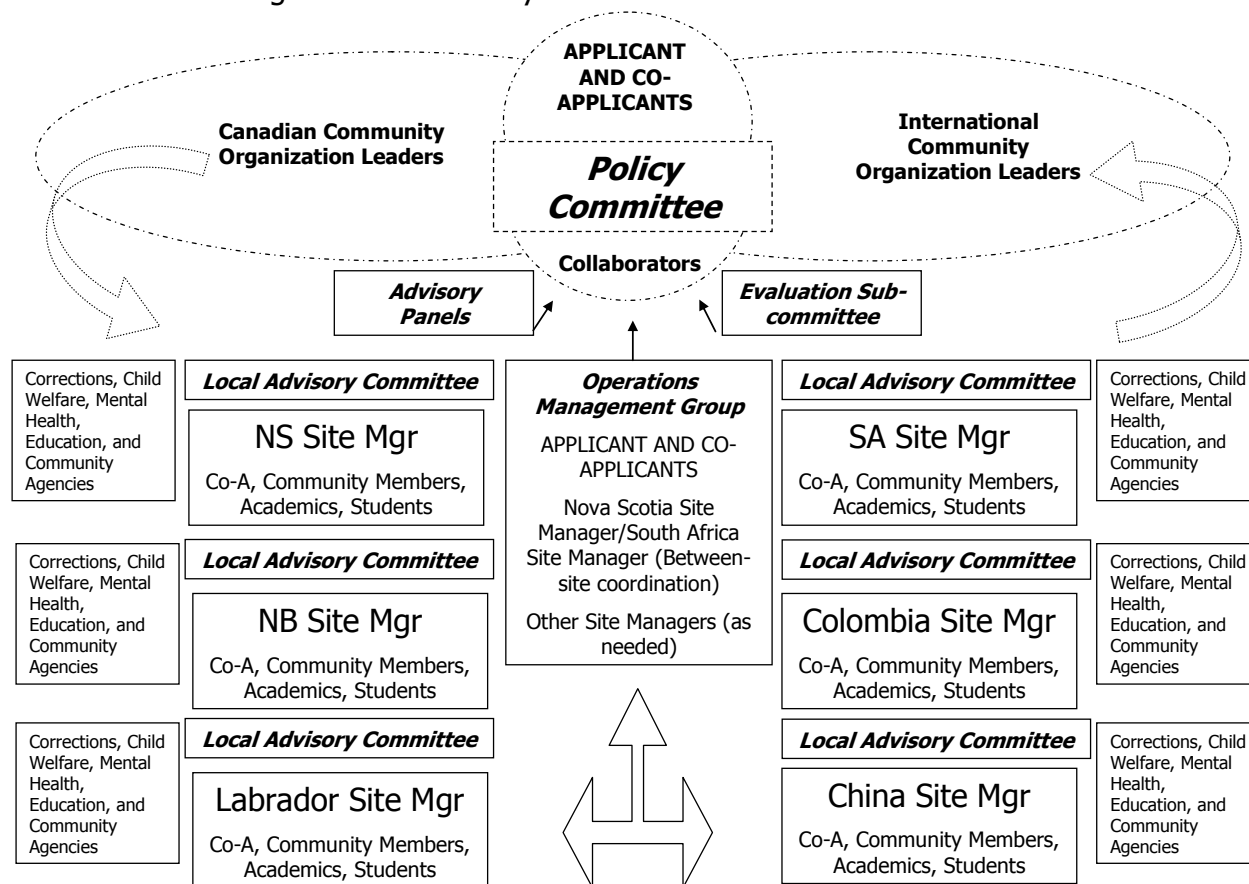
Together, we seek to achieve the following (with indicators):

1. *Create new knowledge* (produce a significant number of publications and reports, and make information available on our website and to communities in ways that broaden our knowledge of resilience across cultures)
2. *Enhance local capacity to innovate new programs and research* (increased international recognition of researchers; growth in global network of community sites and academic institutions with possibility of sparking innovation; extent to which collaborators have influenced the policy and/or practice agendas of their communities)
3. *Ensure high ethical standards* (provide support, advice and guidance on ethics issues relating to research and services for youth; compliance with ICURA/national ethical guidelines)
4. *Strengthen communication and collaboration* (growth in collaborations and partnerships; increased engagement with the community; application of findings to intervention design)
5. *Substantial contributions to training junior researchers and students* (involvement in annual training seminars and bi-annual conferences; number and quality of international exchanges between junior scholars, students and community policy designers; number of publications/presentations produced by junior researchers; assessment of mentorship/internship/training experiences)
6. *Demonstrate attention to gender equality* (numbers of communities and individuals [male and female] impacted; numbers of persons trained as junior researchers (male and female); degree to which gender issues are address/analyzed in the research and implementation phases of the ICURA)
7. *Achieving high standards of governance and accountability* (effectiveness/timeliness of planning, monitoring and reporting; effective information management, including maintenance of website and communication links; effective and sustainable governance arrangements; efforts to ensure long-term functioning of the RRC and its partners globally)

### **Structure and Governance (Figure One):**

The partners agree to establish and participate in the local and international governance structures of the ICURA as described in Figure One.

Figure One: Pathways to Resilience Governance Structure



**Scope of the Research Partnership:**

As partners we agree to develop a common methodology across all research sites. This includes validating the RRC's Child and Youth Resilience Measure (CYRM) and authoring both quantitative measures (The Pathways to Resilience Youth Measure-PRYM) and qualitative protocols for data gathering appropriate to each community. A summary of the research methods will be kept up-to-date in a research manual. Changes to procedures in one research site should, when possible, result in changes to the research protocols across all sites. The partners agree to keep each other informed of all changes to the research design.

**Contextualization:**

Each partner agrees to adapt all aspects of the research to their local context in order to ensure the procedures are culturally sensitive. Questions will, when necessary, be added to the quantitative measures, and qualitative data will be gathered in culturally appropriate ways to ensure the research fits local contexts.

The partners agree to share between sites their best practices with regard to contextualization in order to broaden our collective understanding of research across cultures.

### **Sharing Data and Findings Between Researchers:**

The partners agree to share all data and reports on findings with their community partners in ways that are accessible. Where community partners request specific analyses of the data, the research partners will endeavor to provide reports that answer questions of local importance.

The partners also agree to share all anonymized data and reports on findings across sites for the purpose of making cross-site comparisons. Sharing of these products is intended to build a body of theory based on analyses of the aggregated data and meta-analysis of findings.

### **Secure Storage and Transfer of Data:**

Each site is to have access to a full composite database of anonymized data from all research sites. Only in the data's countries of origin (the sites where the data is originally produced) will the database include identified data specifically for the purposes of re-contacting participants and distributing findings.

### **Fair Use of Data Within Research Sites:**

The partners agree that the site specific data they produce within their own countries may be analyzed and results published in any way that is (a) ethical, and (b) agreed to by the site Co-P.I. who is responsible for the research locally.

The data is the property of the local research team, including both the academic and community partners. Individuals may publish findings independently with the permission of the country Co-P.I. The partners agree to protect the intellectual property of the entire research team, sharing with non-team members methods and data only when there is an agreement to (a) recognize the contribution of the Pathways to Resilience ICURA, the RRC, and individual team members (when appropriate), and/or (b) to share data and findings with the country specific team and the international partners to advance the goals of the research project.

### **Fair Use of Data Between Research Sites:**

The partners agree that the data they produce collectively is to be shared (in anonymized form) and analyzed. Findings may be published in any way that is (a) ethical, and (b) agreed to by at least two of the Co-P.I.'s responsible for the data that is being used.

In cases where the intellectual property which is being reported (e.g., in papers, presentations, and other forms of publication/dissemination) reflects the contribution of one or more team members from different research sites, reasonable credit should be given to the partners who made a significant contribution to the production or analysis of the multi-site data.

While we recognize that no single publication or presentation can acknowledge the contributions of every team member across all sites, partners who publish/disseminate findings based on an analysis of the entire international data set agree to: (a) acknowledge the contributions of the

entire Pathways to Resilience Research Team and the RRC (a footnote or other strategy is sufficient); *and* (b) acknowledge as co-authors one or more of the Co-P.I.s, collaborators, or other researchers who were responsible for the research.

No data should be published by individuals who list themselves as first authors unless they contributed to the collection of the data or shared responsibility for the research. Researchers, students, and community partners who helped with the study are all eligible to use the data. The partners agree that to protect our intellectual property, findings and discussions of methods should first be published/disseminated by the team members who were directly responsible for conducting the research.

Where the data are available to researchers who are not part of the original research team, and an analysis is undertaken intended for publication/dissemination, at least two Co-P.I.'s should agree to the third party use of the aggregated data. In such cases, it is expected that publication will: (a) acknowledge the contributions of the entire Pathways to Resilience Research Team and the RRC (a footnote or other strategy is sufficient); *and* (b) acknowledge as co-authors one or more of the Co-P.I.s, collaborators, or other researchers who were responsible for the research in a research site other than the one where the analysis is taking place.

Some examples of how we can implement fair use across research sites include:

- A group of researchers in one site produce a paper for a country specific journal detailing the methodology of the ICURA, parts of which were developed in another country. Publication would require participation of one or more external site Co-P.I.'s if the content of the article is based on research design work done elsewhere.
- A group of researchers in one site conduct an analysis of the data using procedures developed in another site (i.e., statistical software syntax, or a qualitative data analysis software list of codes). They should include in the authorship those responsible for the data analysis procedures.
- A Co-P.I. gives the aggregated data from his/her site and other sites to a graduate student *who helped gather the data as a research assistant*. In this case, analysis and interpretation may be conducted as part of the student's graduate studies. The student may be use the data fairly, including publishing findings as first author.
- However, where analysis of the aggregated data is done by a person *who was not part of the original research team that gathered the data* (as a researcher, community partner, or research assistant), fair use requires permission from at least the country Co-P.I. and one other country Co-P.I. whose work is being used in the aggregate analysis. The non-team member doing the analysis should not receive first authorship. Partners agree to protect themselves and their aggregate data being given to non-ICURA team members who publish findings as first author before those who conducted the research.

### **Expenses and Travel:**

All expenses related to the research in each country will be the responsibility of the local research team. Funds will be administered by the Co-P.I.'s.

Travel between research sites, and costs associated with between site research, analysis, or publications/presentation, is the responsibility of the site where the researcher originates.

The partners agree to seek supplementary funding individually and together to help expand the research and fund between country travel and learning opportunities. Any partner may initiate, with the support of some or all of the partners, an application for national or international funding. The partners agree to support one another in these applications and share resources (such as community contacts, draft proposals, and research design expertise).

**Website:**

The RRC in Halifax agrees to maintain the website for this ICURA using funds from the Canadian portion of the research. Partnerships are to be noted on the website's homepage. Any international partners may request additions to the website. The partners agree to pay for any costs incurred modifying the site to meet their country specific needs (e.g., a secure file sharing site, a conference registration page, etc.).

**Conferences and Meetings:**

Each partner agrees to host at least one meeting of the entire research team over the five year term of the ICURA. When possible, researchers will be invited to provide training or present in the host communities to help build local research capacity and disseminate knowledge to community partners.